

Rack Type Single Rinse

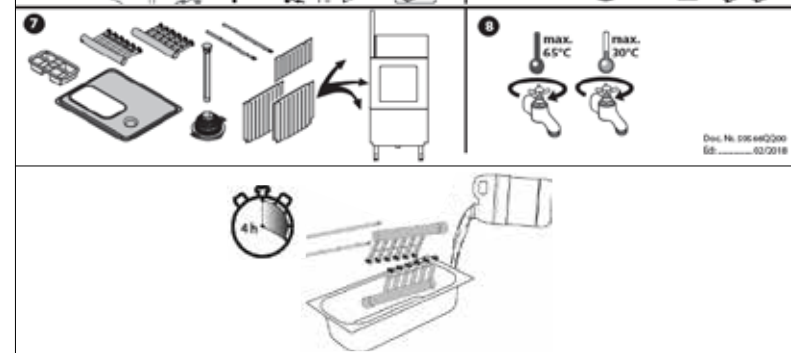
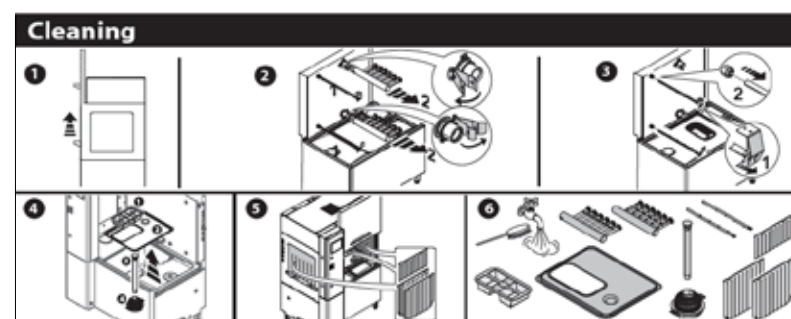
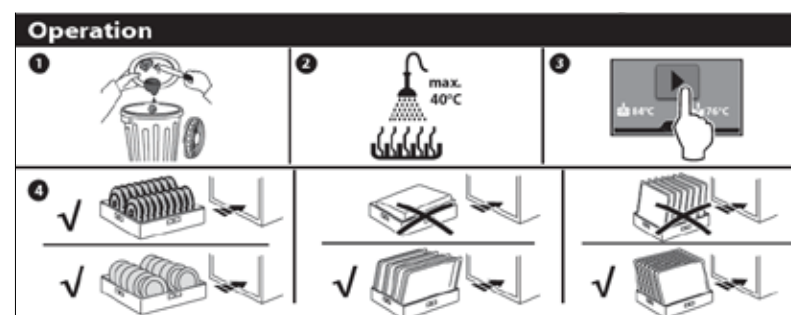
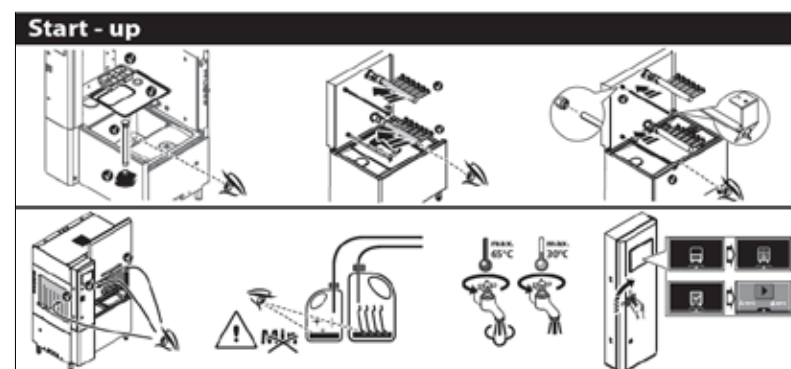


User maintenance guide



1 Tank and inside cleaning – phase 1

1. Set the machine in STAND-BY and wait the water in the tank to cool down 50°C.
2. Switch OFF from the touch control panel and turn the disconnecting switch from "I" to "O".
3. Close the water supply and open the door.
4. Remove in sequence the basket, the flat filters and the overflow.
5. When the tank will empty, remove also the tank filters, top/bottom wash and rinse arms and the curtains



2 Tank and inside cleaning – phase 2

1. Manually remove any large solid residues from the tank then use a cannula of running water to wash the inside and the tank, also rinsing the detergent and food residues.
2. Clean the inside of door with a damp cloth and neutral detergent



3 Filters-Arms-Curtains cleaning

Carefully clean all items with hot water and neutral detergent. For better result use a brush with a plastic bristles and a sponge.



4 Cleaning completion

At the end of cleaning operations, refit all the items previously removed.



5 Wash and Rinse Arms descaling

Once per month, after daily cleaning wash and rinse arms, descale with vinegar prior to refit all the items. For an effective descaling, soak the arms in vinegar for four hours, then rinse.



Cleaning external surfaces

Wash the external surfaces with warm, soapy water. Avoid using detergents containing abrasive substances, steel wool, brushes or steel scrapers. Rinse with a damp cloth and dry carefully. Avoid using chlorine or ammonia-based products. Clean the control panel with a soft cloth dampened with water and, if necessary with neutral detergent. Do not wash the equipment with direct or high pressure jets of water. With the aim of reducing the emission of polluting substances into the atmosphere, it is advisable to clean the equipment (externally and, when necessary, internally) with products that have a biodegradability exceeding 90%. **Electrolux Professional strongly recommends to use Electrolux Professional approved cleaning agents, rinse and descaling agents to obtain better results and maintain product efficiency over time.** Damages caused by cleaning, as a consequence of use of not approved cleaning agents, rinse and descaling, will be excluded by the warranty.

The operations described must be performed wearing the needed Personal Protection Equipment. Refer to the User Manual.

Planned Maintenance Programmes

In order to ensure the safety and performance of your equipment, it is recommended that regular service is undertaken every 12 months by Electrolux Professional authorised engineers in accordance with the manufacturer recommendations. Please contact your local Electrolux Professional Service Centre for further details of service agreements available.

Suggested for you

For more Accessories & Consumables please look at our Catalogues or contact our Electrolux Professional Service Partner.



**C11 Eco
Detergent for
Dishwashers**
0S2092



**C12 Rinse
Aid for
Dishwashers**
0S2094



**C13 Eco
Detergent for
Dishwashers**
0S2093



**C14 Rinse
Aid Plus for
Dishwashers**
0S2095



**Trays basket;
red**
048890



**Basket for 18
plates; yellow**
048795



**Cutlery
basket; brown**
048797



**Basket 24/48 cups
- 500x500x105mm;
blue**
048796

Anomaly	Description	Instructions to User
E10	USB not recognized	Use USB 2.0 FAT32 formatted flash memory key
E24	Door switch error	Try to open/close the door; if the error persists, call service
E44 - E45 - E46	No communication UI - NIU	It is possible to continue washing. Communication to CLOUD interrupted until restoring the connection Call service to restore connectivity features
E104	Rinse circuit not able to fill the tank during boiler filling procedure	1. Ensure the main water supply valve is opened and the water pressure is at least 1.5bar 2. If the message persists, clean the tank filter 3. If the message persists, check the overflow pipe and insert it correctly in the tank If the message persists, call service
E105	Rinse circuit not able to fill the wash tank	Ensure the main water supply valve is opened and the water pressure is at least 1.5bar If the error persists, call service
E106	The level in the tank does not increase as expected	1. Open water supply or check the pressure is 1.5 bar at least 2. Clean tank filter 3. Check overflow pipe presence and proper fitting 4. Check the pipe and eliminate any choke points If the error persists, call service
E108	The level in the tank does not increase as expected	1. Open water supply or check the pressure is 1.5 bar at least 2. Clean tank filter 3. Check overflow pipe presence and proper fitting 4. Check the pipe and eliminate any choke points If the error persists, call service
E110	The level in the tank does not get the air trap within the timeout	1. Open water supply or check the pressure is 1.5 bar at least 2. Clean tank filter 3. Check overflow pipe presence and proper fitting 4. Check the pipe and eliminate any choke points If the error persists, call service
E113	The level in the tank does not get the air trap within the timeout	1. Open water supply or check the pressure is 1.5 bar at least 2. Clean tank filter 3. Check overflow pipe presence and proper fitting 4. Check the pipe and eliminate any choke points If the error persists, call service
E114	Tank filling valve is not able to fill the wash tank	1. Open the main water tap 2. Clean the tank filter 3. Check the overflow pipe and insert it correctly in the tank 4. Clean the air trap In case the warning persists, call service
E115	Leaking in the draining circuit	1. Check the overflow pipe and insert it correctly in the tank
E117	The tank level is too high	1. Clean the overflow pipe 2. Clean the tank filter 3. Clean air trap Switch OFF/ON the appliance If the problem persists call service
E118	Level sensor out of range	Empty the tank and clean the air trap. Read the tank level from the Information menu: it has to be close to 0 mm. If the error persists call service
E122 - E123	Wash lever does not work properly	It's possible to continue operating by running in manual mode: the machine will operate in continuous mode. Check possible damages at the self-start lever and call service reporting about the finding
E127	Rinse pressure too low	Ensure rinse arms are well positioned Check inlet pressure (min 1,5 bar) and if the warning persists call service
E128	Rinse pressure too high	Clean/Descal the rinse arms If the warning persists call service
E195	Conveyor gear motor thermal protection	1. Check there are any objects that block the conveyor, or the slide wheels and remove them. 2. If the problem persists, please call service center It is possible to keep on washing, entering manually the racks and pushing them until the outlet

Anomaly	Description	Instructions to User
E222 - E223	Rinse lever does not work properly	It's possible to continue operating by running in manual mode: the machine will operate in continuous mode Check possible damages at the self-rinse lever and call service reporting about the finding
E232 - E233 - E234	Issue with the boiler	The machine rinses with cold water. Call service to restore full functionality
E1105	The rinse circuit is not able to fill the wash tank	1. Open the main water tap 2. Clean the tank filter 3. Check the water pressure of the main water tap. It has to be 1.5 bar at least 4. Fix up the hose path. In case, call Service Center to replace the hose If the problem persists, call service
E1114	Tank filling valve YV1 is not able to fill the wash tank.	1. Open main water tap. 2. Clean tank filter. 3. Check overflow pipe and plug it correctly in tank. 4. Check main inlet water pressure: to be 1.5 bar at least. 5. Clean air trap. 6. Fix up hose path. In case, call Service Center to replace the hose. If the problem persists, call service.

